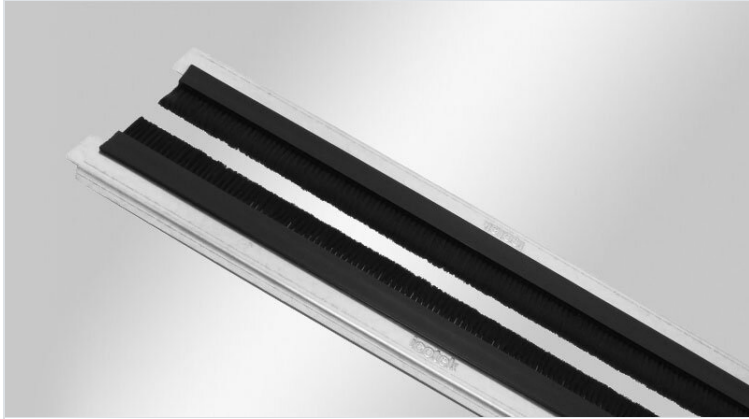


KDR-BES split gland plates with brush grommets

for Rittal TS 8 enclosures



RoHS
compliant

REACH
COMPLIANCE

Made in
Germany

The new 2-piece enclosure gland plates KDR-BES-TS8 are supplied with preassembled brush grommets.

The gland plates are installed with standard Rittal clips.

Depending on the maximum cable diameter to be routed, the 2 halves of the brush gland plate are aligned further or closer to each other.

The gland plates KDR-BES-TS8 are perfect for protection of the enclosure interior against dirt.

Specifications

Material	Base plate: Steel, zinc plated Brushes: Polyamide
Operating temperature	-20 C° to 90 C°
Properties	silicone free, halogen free

Advantages & Benefits

- During assembly, almost the complete base of the enclosure can be used for installation of cables
- Subsequent assembly possible

Product types & Sizes

KDR-BES-TS8-600-58000



Part No.	58000	For enclosure	600 mm
EAN	4251269315	width	
	787	Sight size of	435 mm
Package quantity	1	base opening	
Width	125 mm		
Height	16 mm		
Suitable for enclosure	Rittal TS 8		
Length	458 mm		

KDR-BES-TS8-800-58006



Part No.	58006	For enclosure	800 mm
EAN	4251269315	width	
	794	Sight size of	635 mm
Package	1	base opening	
quantity			
Width	125 mm		
Height	16 mm		
Suitable for	Rittal TS 8		
enclosure			
Length	658 mm		

KDR-BES-TS8-1000-58012



Part No.	58012	For enclosure	1.000 mm
EAN	4251269315	width	
	800	Sight size of	835 mm
Package	1	base opening	
quantity		Division bar	no
Width	125 mm		
Height	16 mm		
Suitable for	Rittal TS 8		
enclosure			
Length	858 mm		

Part No.	58018	For enclosure	1.200 mm
EAN	4251269315	width	
	817	Sight size of	495 mm
Package quantity	1	base opening	
Width	125 mm		
Height	16 mm		
Suitable for enclosure	Rittal TS 8		
Length	518 mm		

